



KONICA MINOLTA



The essentials of imaging



bizhub PRO C6500

The universal colour genius

bizhub PRO 

Production system bizhub PRO C6500



Hotline
01111114194

فرع فيصل: 3 ش فهمي حجازي - من حسن عبد العال - متفرع من ش فيصل - أمام إدارة الهرم التعليمية
ت: 01112000561-01112000645-33935880-33935881
فرع مدينة نصر: 17 ش عبد الحكيم الرفاعي - من ش عباس العقاد - أمام الحديقة الدولية
ت: 01112000539-01112000568-26721840-26721839
فرع اسكندرية: واپور المياة 25 ش أحمد ذكي أبو شادي - متفرع من ش المنارة - أمام نادي مياة أسكندرية
ت: 01211644002-01211644470-01211634446-01211644005-4252158



Smart colour power all-round

Colour is essential for the creativity of professionals in advertising agencies and the graphic arts environment. So are a superior image quality for proofing purposes and a high production speed. Of equal importance is the economical aspect – and Konica Minolta has combined all these merits in the new colour production system bizhub PRO C6500.

- With its identical high speed of 65 colour or black & white pages per minute, the bizhub PRO C6500 represents a significant new development in the field of full colour devices. It features Konica Minolta's advanced colour processing technology, and was designed to provide quality, reliability, ease of use and economy – all essential requirements for every professional!
- The bizhub PRO C6500 combines an extensive media flexibility with various in-line finishing capabilities, offering to graphic artists and other users the creativity required for their design work.

At the same time its sturdy, metal construction ensures absolute dependability while the compact design facilitates its integration at locations where space is limited. Convenient operation and ease of use are other attributes that were important development criteria. And a true highlight of the bizhub PRO C6500 is its remarkable registration accuracy which ensures perfect results in duplex printing, including brochures and booklets.

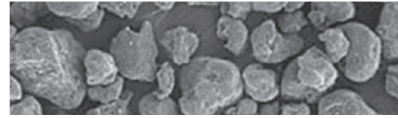
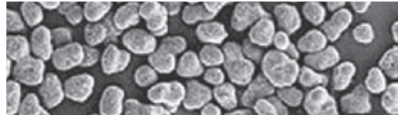
- Thanks to Konica Minolta's CS Remote Care concept, with the bizhub PRO C6500 unplanned stand-stills are a thing of the past. And the system's low overall running costs will surprise even those operating on a tight budget.

bizhub PRO C6500 

The bizhub PRO C6500. Essential colour and all-round power – why go for less!

Simitri HD® polymerised toner

Conventional toner



No limits to colour and quality

Fast colour and superior quality are what professionals in the graphic arts environment really look for, whether they need a device for creative work and proofing or want to produce small print runs or sample quantities of their designs for customers. Thanks to a range of proprietary Konica Minolta technologies the bizhub PRO C6500 fulfils these essential requirements with regard to colour, quality and speed to perfection.

→ Compact competence and reliability

For a start the bizhub PRO C6500 is amazingly compact for a device in its class. To many it's remarkably small footprint will be a real asset, especially if the bizhub PRO C6500 is to be installed in a crowded print room or an advertising agency where space is at a premium. Nevertheless its sturdy and robust construction ensures a continuous and absolutely dependable performance.

→ Simitri HD® polymerised toner

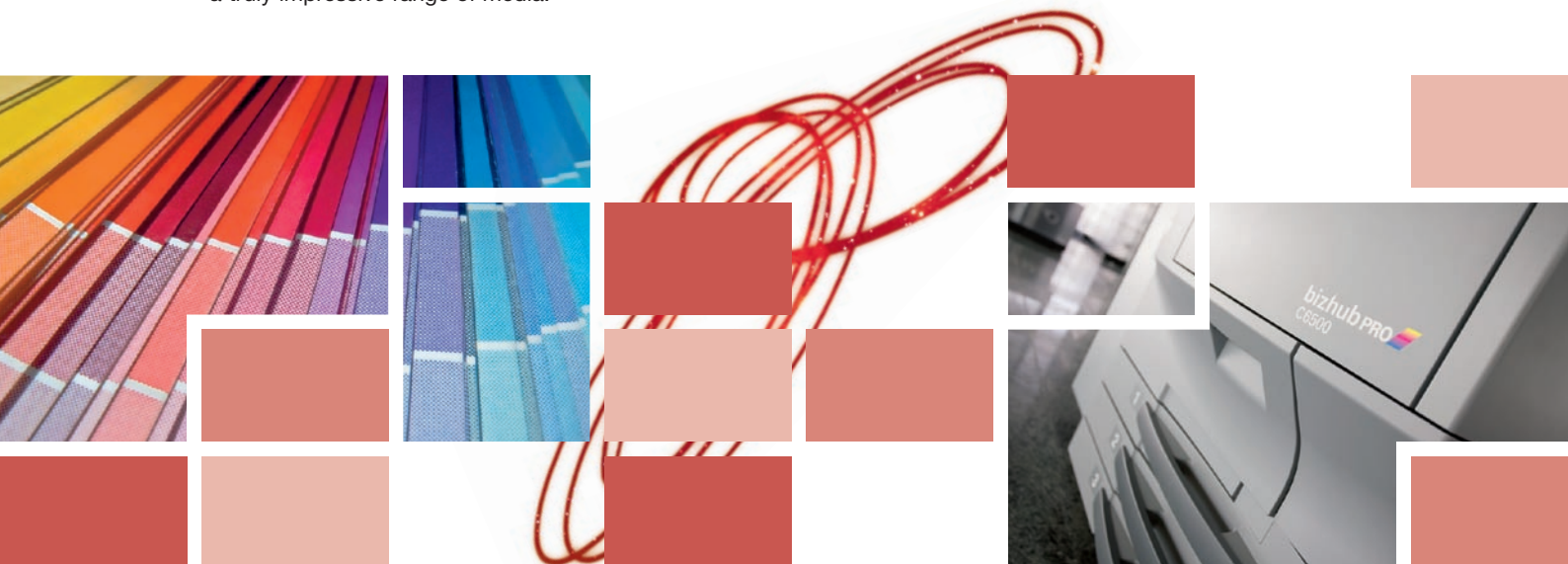
Konica Minolta's Simitri HD® (HD – High Definition) polymerised toner takes image quality to new heights: Its minute but uniform particle size allows the precise reproduction of even the finest lines without sacrificing a perfect black density. Simitri HD® also ensures an unparalleled colour image quality and, due to a reduced fusing temperature, supports a truly impressive range of media.

→ Powerful choice of controllers

The internal Fiery controller (IC-408) delivers professional print results quickly and efficiently. Featuring EFI's highly efficient Fiery colour management system it supports users with an extensive standard range of utilities for varied applications.

Additionally, two external controller alternatives are perfect choices for any professional environment. Featuring latest Fiery technology, the external Fiery controller (IC-303) enhances the comprehensive bizhub PRO C6500 functionality, providing an intuitive and user-friendly interface between operator and printer.

The optional Creo Colour Server turns the bizhub PRO C6500 into a robust workflow solution for graphic arts businesses and professional high-end environments that look for exceptional productivity and comprehensive personalised printing solutions.



Tomorrow's technology today



The bizhub PRO C6500 combines a fast colour speed, impressive media flexibility and superb output quality with durability and reliability. By offering sustainable, reasonable running costs Konica Minolta's high-speed colour production system guarantees competitiveness and represents an economically viable printing solution for environments that operate on a limited budget but need to produce perfect, high-quality results.

→ Unique colour processing technology

The bizhub PRO C6500 provides Konica Minolta's advanced colour processing technology. S.E.A.D., which stands for „Screen-Enhancing Active Digital Process“, makes available a range of technical innovations that enable the bizhub PRO C6500's exceptional colour reproduction at such high speed.

- A newly applied unique screening method provides an improved image quality with considerably smoother backgrounds. Also new Konica Minolta's ITbit (Image Tag bit) technology much enhances halftone printing, showing visible improvements in particular for outlines, reversed and slim text.
- The high speed and amazing precision of Konica Minolta's fast colour engine is made possible by an innovative dual-beam laser unit. And at the core of the bizhub PRO C6500 are three HI-PER ASICs (high-performance image processing application-specific integrated circuits) – these little chips contain many of the proprietary Konica Minolta technologies essential for this system's outstanding performance.

→ Impressive media flexibility

Paper processing in the bizhub PRO C6500 is fast and ultra-smooth. Thanks to Konica Minolta's "air-assist" paper feeding technology the media flexibility of this colour production system is extensive and covers a wide range of substrates, such as paper weights of up to 300 gsm, coated paper, card and digital offset stock.

With up to 4,250 pages input capacity the bizhub PRO C6500 is suitably equipped even for long print runs and continuous production. Advanced features like the mixplex and mixmedia functionality guarantee professional output also of complex and highly individual print jobs. Additionally the optional large-capacity paper magazine can be equipped with a heating unit (optional) that dries paper stock before it's used, yet again increasing the system's feeding reliability.



Professionally productive

The bizhub PRO C6500 is comprehensively equipped to ensure highest levels of productivity while minimising manual interventions and production interruptions. An array of features and functionalities increases user convenience and facilitates the fast processing of jobs:

- With Konica Minolta's smart colour production system short-run printing is fast and keeping short turnaround times easy! Its output capacity of up to 65 pages per minute in both full colour and b/w, and its paper and toner refill on-the-fly functionality make the bizhub PRO C6500 ideal for heavy-duty production and average monthly output volumes of 50,000 pages or more.
- Ease of use is just one of the bizhub PRO C6500's many attractive assets. User convenience, fast and easy handling and no-nonsense operation were top development priorities for Konica Minolta's colour production system. User operation and programming for example are straightforward and intuitive via the large full-colour operator panel that provides clear and easy access to all functions.



- One precondition for faultless print production is absolute precision: The bizhub PRO C6500 meets this challenge with a back-to-front and page-to-page registration that comes very close to offset printing results. This brings noticeable benefits especially for the production of booklets and brochures – only two of the more complex jobs the bizhub PRO C6500 takes in its stride!
- Dependability is another issue that has top priority for professionals – and the bizhub PRO C6500 has been designed with reliability in mind. Beyond that Konica Minolta's remote diagnostics system CS Remote Care provides pro-active support once the bizhub PRO C6500 is in the field. With constant analysis of the system performance CS Remote Care enables automated reporting and preventive maintenance, effectively assuring maximum system uptime.



In-line finishing for professionals



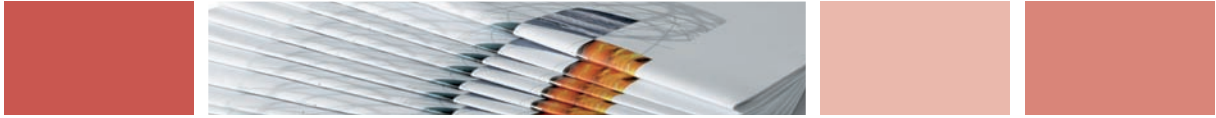
The superior quality of printed output is important, but so is the form and feel of the complete document. To automate the finishing process and enable the one-stop production of sophisticated, high-impact print products, Konica Minolta makes available a choice of in-line finishing functions that further enhance the capabilities of the bizhub PRO C6500.

- Upgrading the bizhub PRO C6500 with the booklet finisher will automate the production of booklets and brochures, providing a convenient and productive in-line half-fold and saddle-stitching functionality. Booklets can consist of up to 20 sheets, allowing a content of max. 80 pages.
- Both the booklet finisher and the staple finisher offer multi-position stapling for up to 50 sheets per stapled set as part of their versatile functionality.
- Extra flexibility is included with a letter-folding function for sets of max. 3 sheets, especially convenient for the automatic production of mailings.

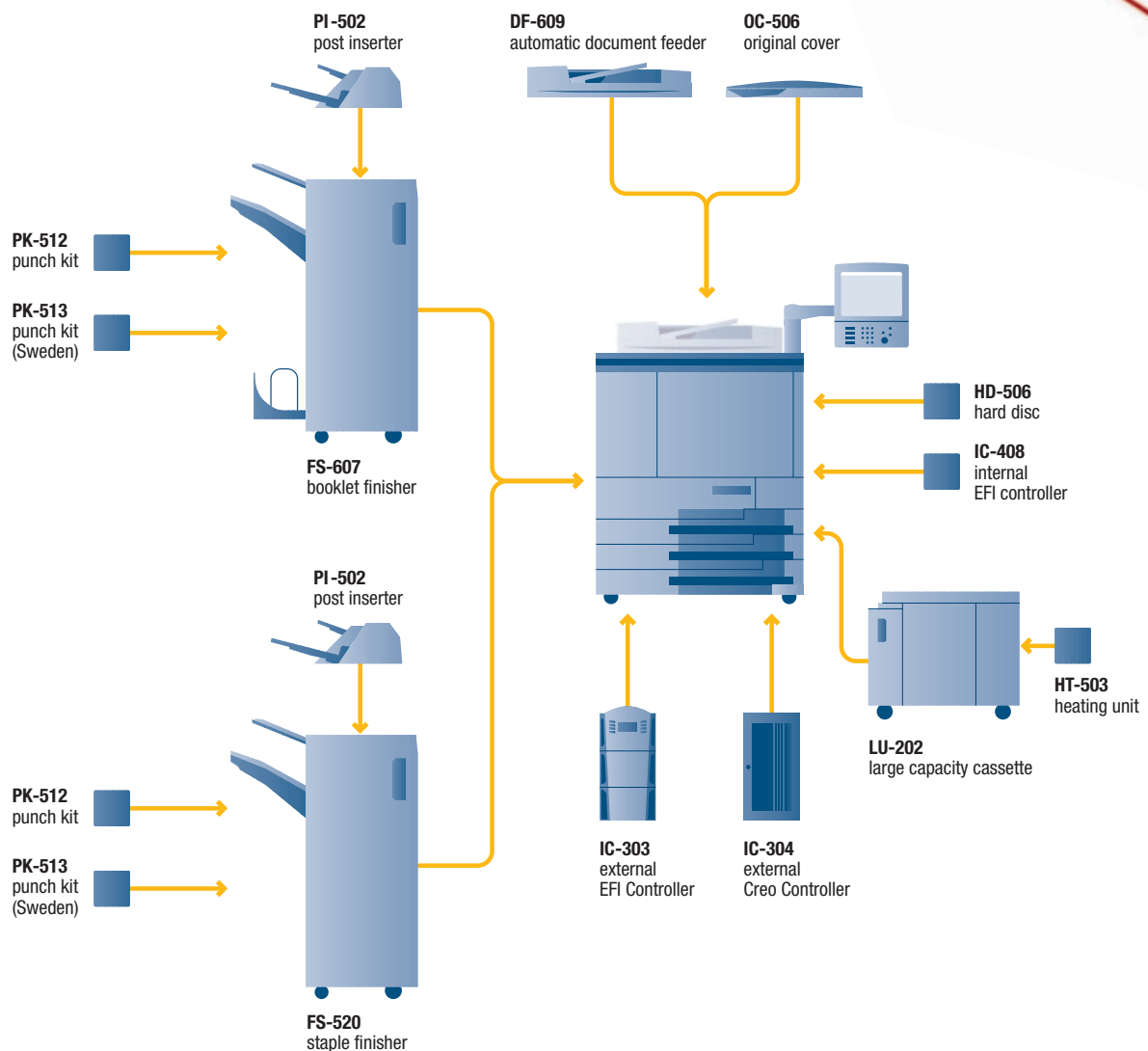
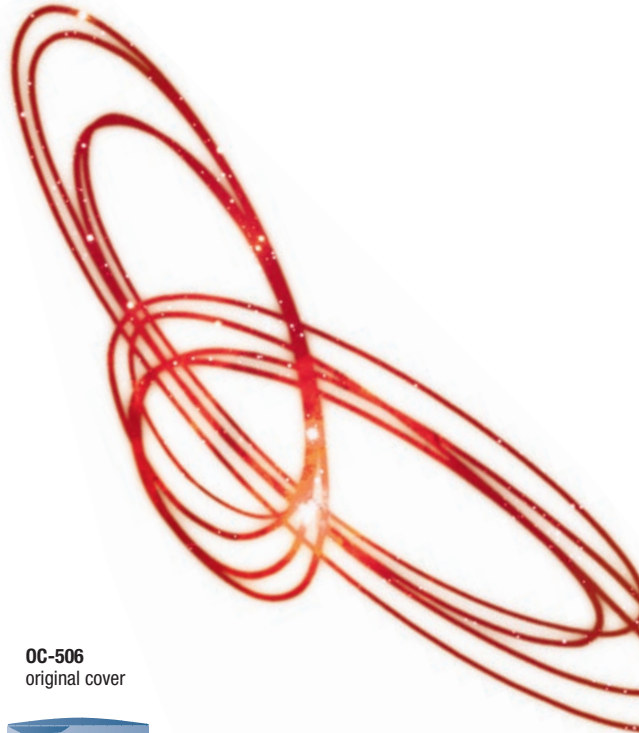
- In addition, in-line punching of 2 or 4 holes is available as an optional upgrade to the booklet and the staple finisher.
- A post inserter automates the process of inserting pre-printed covers into documents that have been printed on the bizhub PRO C6500. Also available for both finishers, this option further enhances the scope of applications possible with Konica Minolta's smart colour production system.

With this comprehensive choice of finishing features the bizhub PRO C6500 is perfectly equipped for the production of booklets, brochures, manuals, reports, mailings and other documentation.





Your options at a glance





KONICA MINOLTA

Simitri HD
High Definition Polymerised Toner



Technical specifications

Copier specifications

Copy speed
65 cpm (A4)
36 cpm (A3)

Copy resolution
600 x 600 dpi

1st copy/print
6.5 sec. (colour A4)

Gradations
256 gradations

Magnification
25–400% in 0,1% steps

Multiple copies
1–9,999, countdown,
interruption mode

Copy memory
Standard: 4x 256 MB
Max.: shared with copier HDD

Copier HDD
4x 40 GB

Printer specifications

Print speed
65 ppm (A4)
36 ppm (A3)

Print resolution
Max.: 600 x 1,800 dpi

IC-408 (Internal EFI Fiery Controller)

Page description language
PostScript 3, PCL*, TIFF, PDF

Printer driver
Windows 2000/XP/Server 2003
Mac OS X

CPU
Intel Celeron 2.8 GHz

Interface
Ethernet (10/100/1000-Base-T)

Print memory
Standard: 512 MB

Printer HDD
80 GB

IC-303 (External EFI Fiery Controller)

Page description language
PostScript 3, PPML, TIFF, PDF

Printer driver
Windows 2000/2003/XP
Mac OS X

CPU
Intel Pentium IV @3.2 GHz

Interface
Ethernet (10/100/1000-Base-T)

Print memory
Standard: 1,024 MB

Printer HDD
160 GB

IC-304 (External Creo Colour Server)

Page description language
PostScript 3, PPML, TIFF, PDF, CT/LW, VPS

Printer driver
Windows 2000/2003/XP/NT 4.0
Mac OS 9.x and 10.x

CPU
Intel Core 2 Duo

Interface
Ethernet (10/100/1000-Base-T)

Print memory
Standard: 1,024 MB

Printer HDD
3x 80 GB

Scanner specifications

Scan speed
39 opm (A4)
22 opm (A3)

Scan resolution
600 x 600 dpi

Scan modes
TWAIN scan
Scan-to-eMail
Scan-to-FTP
Scan-to-SMB
Scan-to-HDD
Scan formats
TIFF (single and multipage), PDF

System specifications

Automatic document feeder
Up to 100 originals
35–210 gsm

Paper weight
64–256 gsm
Up to 300 gsm
(from By pass or LU-202)

Paper size
A5–A3+ (330 x 487 mm)

Maximum image area
318 x 480 mm

Duplex unit
Non-stack type
64–256 gsm

Paper input capacity
Standard: 4,250 sheets (with LU-202)

Paper feed unit:
1 magazines
Up to 2,500 sheets paper capacity
Up to 300 gsm

Paper output capacity
Main tray max.: 3,000 sheets
Per sub tray max.: 100 sheets

Booklet Finisher FS-607 (Option)
Booklet making of up to 20 sheets
(80 images)

2-point and corner stapling
Stapling up to 50 sheets
Centre fold and letter fold in
Auto-shift sorting and grouping
Output for up to 2,500 sheets
Sub tray for up to 100 sheets

Staple Finisher FS-520 (Option)

2-point and corner stapling
Stapling up to 50 sheets
Auto-shift sorting and grouping
Output for up to 3,000 sheets
Sub tray for up to 100 sheets

**Poster Inserter PI-502
(Option for FS-607/FS-520)**

Pre-printed sheet insertion
2 PI trays for 200 sheets each

**Punch kit PK-512
(Option for FS-607/FS-520)**
Punching (2 and 4 holes selectable)

**Punch kit PK-513
(Option for FS-607/FS-520)**
Punching (4 holes)

Warm-up time
Less than 420 sec.

Main unit dimensions (W x D x H mm)
786 x 1,056 x 992 (Main unit + OC-506)

Main unit weight
360 kg (only main unit)

*autumn 2007

All specifications relating to paper capacity refer to A4-size paper of 80 gsm quality.

All specifications relating to scanning, copying or printing speeds refer to A4-size paper that is scanned, copied or printed crosswise in multipage, simplex mode.

Some of the product illustrations contain optional accessories.

Konica Minolta does not warrant that any prices or specifications mentioned will be error-free.

Specifications are subject to change without notice.

Microsoft, Windows and the Windows logo are trademarks, or registered trademarks, of Microsoft Corporation in the United States and/or other countries.

All other brand and product names may be registered trademarks or trademarks of their respective holders and are hereby acknowledged.

Printed in Germany on chlorine-free bleached paper.

Your Konica Minolta Business Solutions Partner:



Konica Minolta
Business Solutions Europe GmbH
Europaallee 17
30855 Langenhagen • Germany
Tel.: +49 (0) 511 74 04-0
Fax: +49 (0) 511 74 10 50

فرع فيصل: 3ش فهمي حجازي - من حسن عبد العال - متفرع من ش فيصل - أمام إدارة الهرم التعليمية
ت: 01112000561-01112000645-33935880-33935881

فرع مدينة نصر: 17 ش عبد الحكيم الرفاعي - من ش عباس العقاد - أمام الحديقة الدولية
ت: 01112000539-01112000568-26721840-26721839

فرع اسكندرية: وابور المياة 25 ش أحمد ذكي أبو شادي - متفرع من ش المنارة - أمام نادي مياة أسكندرية
ت: 01211644002-01211644470-01211634446-01211644005-4252158



Hotline
01111114194