

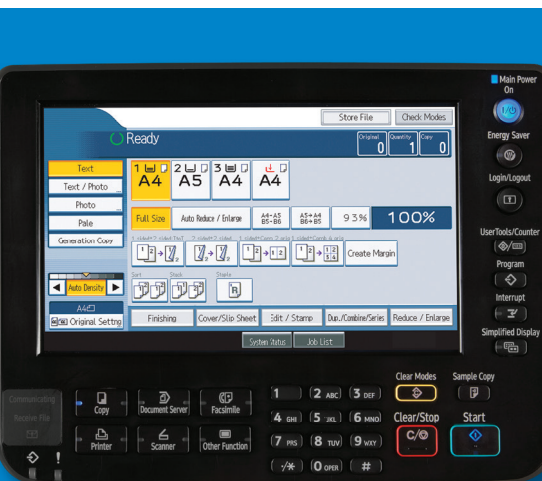
Ricoh Aficio SP 5200S/SP 5210SF/  
SP 5210SR

Digital Imaging System

Versatile, powerful performance



**RICOH**



streamline



produce



- المركز الرئيسي : ٣ ش فهمي حجازي من ش حسن عبد العال - فيصل - 33935881 - 33935880 - 01112000645 - 01112000561
- فرع مدينة نصر : ١٧ ش عبد الحكيم الرفاعي - شارع عباس العقاد - 26721839 - 26721840 - 01112000568 - 01112000539
- فرع الأسكندرية : ٦٠ ش ٣ - إسماعيل سري - عمارة الجهاز المركزي للمحاسبات - 4252158 - 01112000561 - 01156656831

SHARP

KONICAMINOLTA



RICOH

TOSHIBA



KYOCERA



DEVELOP

# Ricoh Aficio SP 5200S/SP 5210SF/SP 5210SR

Discover the value of convenience and productivity.

Turn new challenges and everyday demands into cost-saving opportunities—with the flexible RICOH® Aficio® SP 5200S/SP 5210SF/SP 5210SR Digital Imaging System. The powerful system is specifically designed to simplify everyday general office tasks for midsize workgroups. Users can quickly access exceptional multifunction performance—including monochrome copy, color scan, print and fax capabilities—to complete a wide range of projects faster with incredibly low cost-per-page. Ideal for busier workloads, it offers incredible speed, quality, finishing and intuitive controls to streamline workflow so you can manage your documents more efficiently. Its compact design is packed with versatility for optimal production and value. Plus, it's ideal for organizations deploying a print management solution with Ricoh's Managed Document Services (MDS).



The Ricoh Aficio SP 5200S/SP 5210SF/SP 5210SR combines multifunction performance with user-friendly convenience to streamline workflow for mid-size workgroups in a wide range of environments.



# ProductiveFlexibleSecureVersatile

## Deliver More Efficiently

**The Ricoh Aficio SP 5200S/SP 5210SF/SP 5210SR offers a wide range of innovative features to improve productivity.**

- Boost throughput with exceptional print speeds. The SP 5200S generates up to 47 pages-per-minute. The SP 5210SF and SP 5210SR print up to 52 pages-per-minute.
- Produce crisp, sharp text at up to 1200 x 600 dpi resolution for high-quality, compelling results.
- Take advantage of easy-to-use scanning capabilities to simplify workflow with cost-effective electronic document storage and distribution.
- Work quickly with near-instant system readiness. Warm-up time is less than 20 seconds and first print/copy times are less than 8 seconds.
- Reduce paper, mailing costs and filing space with standard automatic duplexing at nearly 90% percent of rated simplex speeds.
- Maximize convenience with paperless faxing. Super G3 faxing, Internet Fax, IP Fax, and LAN Fax support come standard on the SP 5210SF and are optional on the SP 5200S and SP 5210SR.

## Manage More Conveniently

**The Ricoh Aficio SP 5200S/SP 5210SF/SP 5210SR includes user-friendly controls for convenient, intuitive operation.**

- Maximize uptime, streamline maintenance and reduce cost-per-page output with a high-yield, 25,000-page AIO print cartridge. When depleted, users can quickly replace the cartridge without technical assistance and recycle the spent cartridge with a provided return label.
- Gain clear, unobstructed access to critical device information from virtually any angle with an innovative 8.5" full-color tilting LCD panel.\*
- Perform all of your general office tasks from a single machine without compromising floor space or your budget. The compact footprint offers users more options for placement in more office environments.
- Access most functions, including all paper sources and the print cartridge, in even the tightest spaces via the forward-facing design.
- Set dozens of system parameters such as paper supplies and user authentication from the desktop with Web Image Monitor.
- Monitor device usage in real time with the Ricoh @Remote™ Intelligent Management System and receive service notifications quickly to minimize downtime.

## Protect Document Integrity

**Ensure the right information gets in the right hands with advanced security features that can protect sensitive information from a multitude of threats.**

- Restrict access to system functions with user authentication. Up to 500 user codes can be registered and assigned for optimal efficiency in larger workgroups.
- Ensure optimal data protection with the Data OverwriteSecuritySystem (DOSS). When enabled, it destroys latent images and data from the internal hard drive to prevent document reconstruction.
- Stifle attempts by hackers to steal print job data and passwords transmitted over the LAN with SSL Data Encryption or Wi-Fi Protect Access Support.
- Choose the optional Enhanced Locked Print-NX to store print jobs with encrypted data at the MFP until the user swipes an ID card or enters ID information at the control panel to release the job.

\*SP 5210SF and SP 5210SR only.



The adjustable full-color touch screen control panel on the SP 5210SF and SP 5210SR can be tilted to give users greater visibility and to provide easy access to the 1-bin and finisher trays. It even offers animated guidance screens for easy step-by-step instructions.



A USB Type A port is conveniently located in the control panel for quick and easy printing from/scanning to removable media.



The all-in-one (AIO) print cartridge is ideal for users without technical training. Easily accessible within seconds simply by opening the front cover, this convenient feature restores output to "like-new" image quality.

# PrintCopyScanFax

## Share Information Cost-Effectively

**The Ricoh Aficio SP 5200S/SP 5210SF/SP 5210SR offers a host of scanning capabilities to make electronic document capture and distribution quick, easy and free.**

- Speed scanning tasks with the 50-sheet Automatic Reversing Document Feeder (ARDF). It accepts originals up to 8.5" x 14" (up to 49" long in custom mode for banner scanning) for incredible flexibility and productivity.
- Convert hardcopy documents to electronic files and incorporate them into new documents using TWAIN scanning capabilities.
- Send scanned documents to hundreds of recipients cost-free over the network in one operation with Scan-to-Email/Folder/URL with LDAP support.
- Quickly transfer documents and images to portable media with Scan-to-Media (USB/SD Card) to streamline distribution in any environment.
- Reduce file sizes for scanned color documents without compromising image quality with high compression PDF for faster transmission and printing.

## Connect Your User Network

**The Ricoh Aficio SP 5200S/SP 5210SF/SP 5210SR includes flexible networking support that enables workgroups to produce a wide range of jobs efficiently.**

- Use the robust Controller to support advanced networking features, device monitoring utilities and data protection functions, including innovative device customization and host print capabilities.
- Complete multiple projects with ease. Powerful performance from the 533 MHz processor provides the bandwidth to prepare data streams and expedite project queues to meet the needs of corporate workgroups with 8.5" x 11"/A4 monochrome workflows.
- Enjoy full compatibility throughout the office with standard USB 2.0 Hi Speed Interface and Ethernet connectivity, including support for PCL and genuine Adobe PostScript3® in Windows and Macintosh network environments.
- Store up to 3,000 documents (up to 9,000 pages) on the powerful 128 GB Hard Disk Drive for easy, secure document management.

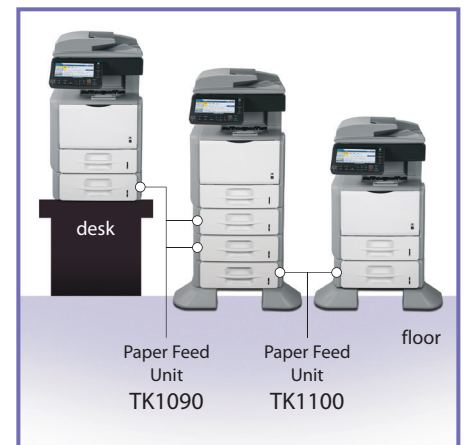
## Handle Every Task

**Engineered to help users complete everyday office tasks with ease, the Ricoh Aficio SP 5200S/SP 5210SF/SP 5210SR offers flexible media handling and finishing to expedite workflow.**

- Support up to 8.5" x 14" paper sizes with front-loading, user-adjustable paper sources.
- Increase paper supply without compromising floor space. Up to three additional paper trays can be added for a maximum paper capacity of 2,300 sheets.
- Finish sets up to 50 pages automatically, and offset stack up to 250 sheets, with the internal finisher that comes standard on the SP 5210SR.
- Accommodate stocks up to 59 lb. Bond/120 lb. Index (220 g/m<sup>2</sup>) from any paper source to ensure print jobs are executed on time and deadlines are met.
- Enhance envelope output productivity with universal feeding.
- Extend acceptable paper sizes up to 35" long in the bypass tray to accommodate banner printing and keep more projects in-house.



Accommodate thicker paper stock—up to 120 lb. Index—from every paper tray to ensure more projects can be completed to specifications in-house.



These flexible systems can be configured for desk or floor placement. Stack up to 3 optional Paper Feed Units to boost input capacity to 2,300 sheets.\* The Paper Feed Unit TK1100 with casters is designed specifically for floor placement.

\*Requires the assistance of a service technician.

## The Total Green Office Solution



**Ricoh continues its long-standing commitment to developing office solutions with environmentally friendly and superior energy- and supply-saving features, without compromising productivity.**

# CompactEffectiveClearEngaged

## User-friendly design improves office productivity.

### User-Adjusted LCD Control Panel\*

See the easy-to-read, tilted control panel comfortably from virtually anywhere.

### Super G3 Faxing

Perform a variety of fax functions with pre-programmed speed, quick and group dial shortcuts on the SP 5210SF. A 1-Bin Tray is included to collect inbound faxes.

### 100-Sheet Bypass Tray

Extend paper sizes up to 35" long for banner production.

### Standard 550-Sheet Paper Tray

Front-facing, user-adjustable paper trays accommodate envelopes and paper sizes up to 8.5" x 14" and stock weights up to 80 lb. Bond/120 lb. Index.

### 3 x 550-Sheet Paper Trays

Add up to three additional paper trays to expand paper capacity to 2,300 sheets.

### 50-Sheet Automatic Reversing Document Feeder (ARDF)

Process originals efficiently—up to 8.5" x 14" and custom banner scanning up to 49" long—to speed the scanning process.

### Internal Finisher

Staple up to 50 pages and stack up to 250 sheets with the space-saving internal finisher on the SP 5210SR.

### Duplex Unit

Copy and print on both sides of each sheet of paper, reducing paper usage by half.

### Easy-Grip Paper Tray Handles

Open and close doors with only one hand, sitting or standing.

\*SP 5210SF and SP 5210SR only.

## Pre-configured to meet your needs.



Model	SP 5200S	SP 5210SF	SP 5210SR
Standard Functions	Copy / Print / Scan	Copy / Print / Scan / Fax	Copy / Print / Scan / Finishing
Print Speed	47 cpm/ppm	52 cpm/ppm	
Super G3 Faxing	Optional	Standard	Optional
Color Touch Panel	Fixed Placement	Adjustable	
Internal Staple Finisher	N/A	N/A	Standard
Inner 1-Bin Tray	N/A	Standard	N/A
Output Capacity	500 sheets	600 sheets	250 sheets



# Ricoh Aficio SP 5200S/SP 5210SF/SP 5210SR

## System Specifications

Aficio®

### Main Unit

Aficio SP 5200S	Part # 406851
Aficio SP 5200SG*	Part # 407570
Aficio SP 5210SF	Part # 406852
Aficio SP 5210SFG*	Part # 407571
Aficio SP 5210SR	Part # 406853
Aficio SP 5210SRG*	Part # 407572

\*Trade Agreement Acts (TAA) Compliant.

Configuration	Desktop
Printing Technology	Laser beam scanning & electrophotographic printing; Monocomponent toner development; All-In-One Print Cartridge Technology
Scanning Technology	Full-Color Flatbed Scanning w/CCD Image Sensor
Scan Type	Sheet, book, three-dimensional objects
Print Speed (LTR)	SP 5200S: 47-ppm, SP 5210SF: 52-ppm, SP 5210SR: 52-ppm
First Print Speed	7.5 seconds or less
Warm-up Time	20 seconds or less
Grayscale	256 levels
Copy Resolution	600 x 600 dpi via Platen Glass, 600 x 300 dpi via ARDF
Print Resolution	1200 x 600 dpi, 600 x 600 dpi, 300 x 300 dpi
Fax Resolution	200 x 200 dpi, 200 x 100 dpi standard; 200 x 400 dpi, 400 x 400 dpi with optional memory
Document Feeding	Automatic Reversing Document Feeder (Standard); Original Capacity: 50 sheets Original Size: 5.5" x 8.5" - 8.5" x 14" (128 mm x 139.7 mm - 216 mm x 355.6 mm); Custom: Up to 49.6" (1260 mm) (Simplex only) Platen: 8.5" x 11.69" (216 x 297 mm) ARDF: 8.5" x 49.6" (216 x 1260 mm) Up to 999
Max. Imageable Area	Platen: 25% - 400% in 1% increments ARDF: 25% - 200% in 1% increments 93%, 78%, 65%
Multiple Copies	155%, 129%
Zoom	550-sheet Tray + 100-sheet Bypass = 650 sheets
Preset Reduction	550-sheet Paper Feed Unit (Up to 3 may be installed)
Preset Enlargement	2,300 sheets
Standard Paper Supply	Standard, up to 8.5" x 14" (Approx. 90% productivity)
Optional Paper Supply	SP 5200S: 500 sheets face down; SP 5210SF: 600 sheets face down (w/1Bin Tray); SP 5210SR: 250 sheets face down (w/Finisher)
Max. Paper Capacity	Standard Tray, Standard Sizes: Letter, Legal, Executive, Half Letter, A4, A5, A6, B5, B6, F/GL, Foolscap, Folio; Envelopes: Com10, Monarch, C6, C5, DL. Custom Sizes: Width: 3.86" - 8.5" (98 mm - 216 mm), Length: 5.52" - 14.01" (140 mm - 356 mm). Bypass Tray, Standard Sizes: Letter, Legal, Executive, Half Letter, A4, A5, A6, B5, B6, F/GL, Foolscap, Folio; Envelopes: Com10, Monarch, C6, C5, DL. Custom Sizes: Width: 3.86" - 8.5" (98 mm - 216 mm), Length: 5.52" - 14.01" (140 mm - 356 mm)
Automatic Duplexing	Standard Tray, Standard Sizes: Letter, Legal, Executive, Half Letter, A4, A5, A6, B5, B6, F/GL, Foolscap, Folio; Envelopes: Com10, Monarch, C6, C5, DL. Custom Sizes: Width: 3.86" - 8.5" (98 mm - 216 mm), Length: 5.52" - 14.01" (140 mm - 356 mm)
Output Capacity	Standard & Optional Tray(s): 14 - 59 lb. Bond/120 lb. Index (52 - 220 g/m <sup>2</sup> ) Bypass Tray: 14 - 59 lb. Bond/120 lb. Index (52 - 220 g/m <sup>2</sup> ). When Duplexing: 16 - 44 lb. Bond/90 lb. Index (60 - 163 g/m <sup>2</sup> )
Paper Sizes	Plain Paper, Recycled Paper, Middle Thick Paper, Thick Paper, Thin Paper, Transparency, Letterhead, Label, Color, Preprinted, Envelopes
Paper Weights	SP 5200S: 18.1" x 20" x 27" (460 mm x 510 mm x 686 mm); SP 5210SF: 18.1" x 20" x 27" (460 mm x 510 mm x 686 mm); SP 5210SR: 18.1" x 24.2" x 27" (460 mm x 615 mm x 686 mm)
Paper Types (all sources)	SP 5200S: 99.2 lb. (45 kg); SP 5210SF: 103.6 lb. (47 kg); SP 5210SR: 116.8 lb. (53 kg)
Dimensions (WxDxH)	120 - 127V, 60Hz Operating: SP 5200S: 863 W, SP 5210SF: 892 W, SP 5210SR: 858 W Energy Saver: 8 W or less UL60950-1, CAN/CSA C22.2 No.60950-1 (c-UL) FCC Part 15 Subpart B, IC ES-003 ENERGY STAR Tier 2, ECP
Weight	5,500 - 15,000 total impressions/month Up to 200,000 total impressions/month
Power Requirements	
Power Consumption	
Safety Regulations	
EMI	
Environmental Standard	
Average Monthly Volume	
Maximum Duty Cycle	
Print Controller	
CPU	533 MHz
Memory	1 GB RAM standard/maximum
Hard Disk Drive*	128 GB (standard)
	*Includes HDD Encryption Unit and Overwrite (DOSS)
Interfaces	Standard: 10/100Base-TX Ethernet, USB 2.0 Hi Speed Type B (for direct computer connection), Dual USB 2.0 Host Interfaces Type A (for external device connection), Front USB 2.0/SD Card Slot Interface (for Scan To/Print From portable media). Optional: Gigabit Ethernet (1000Base-T), IEEE 802.11a/g Wireless, Bluetooth
Printer Languages/Drivers	PCL 5e, PCL 6, XPS, Adobe PostScript <sup>3</sup> *, PDF Direct Print, Genuine iPDFS (optional)
FonTS	PCL: 45 fonts + 13 International fonts; Post-Script 3: 136 fonts; iPDFS: 108 fonts (optional)

Supported Environments	Windows XP, Vista, 7, Server 2003/2003R2, Server 2008/2008R2, Mac OS X v.10.2+, Novell NetWare v.6.5+, Citrix Presentation Server, UNIX/Linux
Network Protocols	TCP/IP (IPv4, IPv6), IPX/SPX, Bonjour
Software Utilities	Bundled Utilities: Web Image Monitor, Font Manager 2000. Optional Utilities: SmartDeviceMonitor for Admin Accounting Package, SmartDeviceMonitor for Client DeskTopBinder Lite, @Remote Communication Gate S Pro
Standard Security Features	Administrator Authentication (5 levels), User Authentication (5 types), HDD Overwrite (DOSS) & Data Encryption, Secure Print, Encrypted Secure Print, Encrypted PDF Mode, Scan-to-Web Mail (SMTP over SSL), IP Address Filtering, Transport Layer Security (TLS), SSL Communication, IPv6, IP Sec, SNMPv3, Quota Setting
Controller Options	IEEE802.11 a/g Interface Unit Type J (Part #414008), Gigabit Ethernet Board Type C (Part #406914), Bluetooth Interface Unit Type D (Part #415818), iPDFS Unit Type 5210 Unit (Part #406816), Data Overwrite Security Unit Type 1* (Part #413955), Remote Communication Gate A (Part #415135), Fax Option Type SP5200 (Part #406594), Fax Memory Unit Type B 32MB (Part #001342MIU), Telephone Handset Type 1018 (Part #410781), HotSpot MFP Option Type E (Part #415621), Browser Unit Type E (Part #414715), File Format Converter Type E (Part #414007), CAC/Piv v3 support**

\*For Common Criteria Certification (CCC) use.

\*\*For TAA Compliant models only. Option requires installation by a Ricoh Authorized Technician.

### Scanner

Scanner Type	Full Color CCD
Scanning Resolutions	Scan-To Modes: 100/200/300/400/600 dpi (Black & White, ARDF & Platen); 100/200/300 dpi (Full Color, ARDF); 100/200/300/400/600 dpi (Full Color, Platen). TWININWSD/WIA: 100 - 600 dpi in 1% increments (Black & White, ARDF); 100 - 1200 dpi in 1% increments (Black & White, Platen); 100 - 600 dpi in 1% increments (Full Color, ARDF & Platen) 200 dpi Over 30-ippm (B&W/FC, LTR @ 200 dpi) Platen: Up to 8.5" x 11.7" (216 mm x 297 mm); ARDF: Up to 8.5" x 49.6" (216mm x 1260 mm) Network: TCP/IP; Scan-to-E-mail: POP, SMTP; Scan-to-Folder: SMB, FTP, NCP B&W Text, B&W Text/Line Art, B&W Text/Photo, B&W Photo, Grayscale, Full-Color Text/Photo, Full-Color Glossy Photo, Auto Color Select (ACS) Auto + 7-step Manual scale Supported Single/Multi Page TIFF, Single Page JPEG, Single/Multi Page PDF, High Compression PDF Scan-to-E-mail, Scan-to-Folder (SMB/FTP/NCP); Scan-to-URL, Scan-to-Media (USB/SD Card) Standard; Authentication: SMTP authentication, POP before SMTP authentication 500; Attention: To, cc, bcc Supported Direct input from control panel, Web Image Monitor, SmartDeviceMonitor for Admin Up to 2 GB without restriction Yes Up to 128 characters Up to 80 characters + 5 pre-registered messages Standard; Protocol Support: SMB, FTP, NCP Direct input from control panel, Web Image Monitor, SmartDeviceMonitor for Admin 100 500 Up to 2000 MB Yes Standard - All models + Web Services (WSD) Scanner for Vista; Operating Systems: Windows XP, Server 2003, Vista, 7, Server 2008/R2; Scan Modes: Standard, Photo, OCR, Filing; Image Adjustment: Brightness, Contrast, Threshold, Gamma Adjustment, Halftone Pattern Date, Page Number, Text
Default Resolution	
Scanning Speed	
Max. Original Size	
Protocols	
Scan Modes	
Image Density	
Image Rotation	
SADF/Batch Mode	
Supported File Formats	
Scan-To Modes	
Scan-to-E-mail	
Max. Addresses/Send	
LDAP Search	
Maintain E-mail Address	
E-mail Attachments	
Input File Name	
Input Subject	
Input Body Message	
Scan-to-Folder	
Maintain Address	
Max. Folders/Send	
Max. Addresses/Send	
File Attachment Size	
Input File Name	
Network TWINAIN Scanning	
Endorse	

### Document Server

Total HDD Capacity	128 GB (Shared with other functions)
Max. Stored Documents	3,000 documents
Max. Pages per Document	2,000 pages

### Fax Option Type SP5200 - Part # 406594

(Standard for SP 5210SF, Optional for SP 5200S/ 5210SR)

Type	Super G3 Transceiver
Circuit	PTSTN, PBX
Number of Lines	1
Compatibility	ITU-T, Group 3
Resolution (dpi)	200 x 100, 200 x 200, 200 x 400, 400 x 400 (for Internet & IP Fax, requires optional SAF memory)
Modem Speed	33,600 bps ~ 2,400 bps w/Auto fallback
Compression Method	MH, MR, MMR, JBIG
Transmission Speed	G3: Approximately 2 seconds/page (w/JBIG) G3: Approximately 3 seconds/page (w/MMR)

Scanning Speed	Up to 40-ppm (B&W, LTR @ 200 x 100 dpi)
Original Capacity/Size	See Scanner & Document Feeding Specifications
Auto Dialing	Up to 2,000 Quick Dial numbers in Address Book 100 Group Dial numbers (500 locations per Group) Standard: 4 MB RAM (approx. 320 pages) Maximum: 28 MB RAM (approx. 2,240 pages)
Page Memory Capacity	1 hour
Memory Backup	LAN Fax, Internet Fax (T.37), IP Fax (T.38)
Additional Fax Modes	Standard on SP 5210SF, requires Fax Option Type 5200 for SP 5200S and SP 5210SR;
LAN Fax	Connection; 10/100Base-TX Ethernet, IEEE 802.11 a/g Wireless, or Gigabit Ethernet interface; Protocol: G3; Max. Addresses Per TX: 500; Operating Systems: Windows XP, Server 2003, Vista, 7, Server 2008/R2; Document Size: Letter, Legal, A4, A5 Standard on SP 5210SF, requires Fax Option Type 5200 for SP 5200S and SP 5210SR; Connection: 10/100Base-TX Ethernet, IEEE 802.11 a/g Wireless, or Gigabit Ethernet interface; Protocol: T.37 Full Mode; Max. Addresses Per TX: 500; Transmission Function: Conversion of files to TIFF format for E-mail TX to a PC; Original Size: Letter, A4 Standard on SP 5210SF, requires Fax Option Type 5200 for SP 5200S and SP 5210SR; Connection: 10/100Base-TX Ethernet, IEEE 802.11 a/g Wireless, or Gigabit Ethernet interface; Protocol: T.38, TCP, UDP/PPM communication; TX/RX Function: To/from IP Fax compatible machines via network; To/from G3 Fax machines via VoIP gateway; Original Size: Letter, A4 (216 mm x 356 mm); Custom: Up to 8.5" x 47" (216 mm x 1200 mm)
Internet Fax	
IP Fax	

### Hardware Accessories

Optional Paper Feed Unit (TK1090) - Part # 406599	
Capacity	550 sheets, 1 or 2 units may be installed
Paper Size Range	3.86" x 6.3" - 8.5" x 14.01" (98 mm x 160 mm - 216 mm x 356 mm)
Paper Weight	14 lb. Bond - 80 lb. Cover/120 lb. Index (52 - 220 g/m <sup>2</sup> )
Dimensions (WxDxH)	17.8" x 20.3" x 5.9" (450 mm x 516 mm x 150 mm)
Weight	19.9 lb (9.0 kg)
Optional Paper Feed Unit with Casters (TK1100) - Part # 406600	
Capacity	550 sheets, 1 unit may be installed as bottom PPU
Paper Size Range	3.86" x 6.3" - 8.5" x 14.01" (98 mm x 160 mm - 216 mm x 356 mm)
Paper Weight	14 lb. Bond - 80 lb. Cover/120 lb. Index (52 - 220 g/m <sup>2</sup> )
Dimensions (WxDxH)	24.7" x 25.0" x 8.7" (627 mm x 635 mm x 220 mm) (including casters)
Weight	26.5 lb (12.0 kg)
Internal Finisher (Standard for SP 5210SR only)	
Tray Capacity	250 sheets
Modes	Shift Sort, Stack, Staple
Paper Weight	14 - 59 lb. Bond/120 lb. Index (52 - 220 g/m <sup>2</sup> )
Stapling	1 position; Top parallel
Staple Sheet Sizes	Letter, Legal, Executive, A4, B5, Foolscap, Folio, F
Staple Capacity	50 sheets/set (Letter)
Staple Cartridge Capacity	30 sheets/set (Legal)
Stack Capacity after Stapling	2 sheets: 33 sets; 30 sheets: 7 sets; 50 sheets: 4 sets
Staple Paper Weight	14 - 24 lb. Bond (52 - 90 g/m <sup>2</sup> )
Staple Cartridge Capacity	5,000 staples
1-Bin Tray (Standard for SP 5210SF only)	
Tray Capacity	100 sheets
Paper Weight	14 lb. Bond - 80 lb. Cover/120 lb. Index (52 - 220 g/m <sup>2</sup> )

### Supplies and Consumables

Item	Yield	Part #
Black AIO Print Cartridge SP 5200HA	25,000 pages*	406683
Staple Type T	5,000/carton	415009
Refill Staple Type T	10,000/carton	415010
Maintenance Kit SP 5200	120,000 pages	406686

Includes 1 Fusing Unit, 1 Transfer Roller, 5 Feed Rollers and 5 Friction Pads

\*Declared yield values based on ISO/IEC 19752. Actual yields may vary based on types of images printed and other factors.

The Ricoh Aficio SP 5200S/SP 5210SF/SP 5210SR ships with one starter AIO cartridge yielding 6,000 pages. All other consumables ship at full yield.

For maximum performance and yield, we recommend using genuine Ricoh parts and supplies. Specifications subject to change without notice.

### Warranty

The Ricoh Aficio SP 5200S/SP 5210SF/SP 5210SR is under warranty against defects for a period of one year from the date of purchase. Consumables are under warranty for a period of 90 days from the date of purchase or until depleted, whichever comes first. Please refer to warranty documents shipped with the product for more details.

— 33935881 - 33935880 - 01112000645 - 01112000561 —

— 26721839 - 26721840 - 01112000568 - 01112000539 —

— 4252158 - 01112000561 - 01156656831 —

● المركز الرئيسي : ٢ ش فهمي حجازي من ش حسن عبد العال - فيصل

● فرع مدينة نصر : ١٧ ش عبد الحكيم الرفاعي - شارع عباس العقاد

● فرع الأسكندرية : ٦٠ ش ٣ - إسماعيل سري - عمارة الجهاز المركزي للمحاسبات