

# RICOH

## Best in class for speed, quality and volume



Priort™ DX 3240/DX 3440

# High speed, low cost printing with user friendly features

Organisations operating in sectors such as education, government and non-profit are facing a common commercial challenge. They need to answer the need for high speed print production at a low, controllable cost. Using digital technology, the DX 3240 and DX 3440 duplicators from Ricoh have been specifically designed to produce high quality document output. The DX 3240 and DX 3440 will add flexibility to your document production with versatile paper handling to fulfil a variety of single sheet output requirements. More print jobs can be accepted, production easily monitored and documents sorted for easy distribution throughout your organisation. Each model is easy to use, reliable and maintains its productive performance. Compelling speed and quality make Ricoh's DX 3240 and DX 3440 the ideal choice for flexible and cost effective high volume document production.

## Productivity and performance

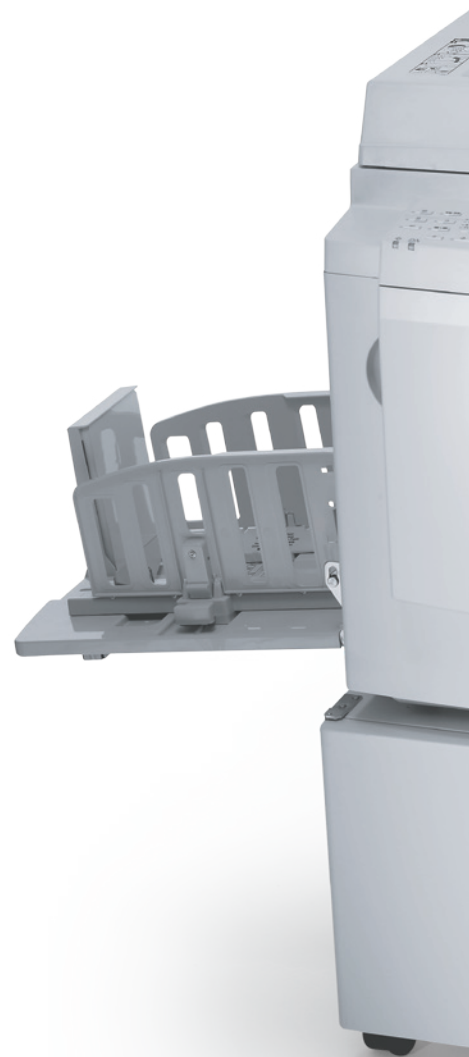
Meet tight deadlines with the productive DX 3240 and DX 3440 duplicators. Both models provide a quick document turnaround with a fast speed of 130 prints per minute (ppm). You can now produce high quality documents such as newsletters, leaflets and forms quickly and efficiently. For more cost effective printing, A3 documents such as pages from textbooks or booklets can be scanned via the platen glass and re-sized to A4. Save time with class mode which produces printed material in class sized batches, ready for immediate distribution.



130 ppm

## High quality and versatile document output

Both models can produce a wide range of documents for a variety of uses including handouts, memos and leaflets. Photographs are printed clearly with fine lines and text is reproduced accurately. You can also add colour impact to your documents, with optional Colour Drum Units available in a range of standard or custom made colours. Enjoy user friendly functionality through the clear and easy-to-use control panel for productive printing at the touch of a button. For greater efficiency, use the optional printer controller and print directly from your PC in a one step process.





### Effective cost control

Achieving a low cost per page is a crucial part of day-to-day document production. The DX 3240 and DX 3440 provide controllable running costs for sustained high volume output. The more you print, the more you save. The user code feature will help you stay in control of your organisation's print output. You can easily monitor the usage for cost allocation per department. Further cost saving is available with Economy mode, which allows you to get more output from each ink cartridge. This feature is ideal for printing everyday internal documents such as forms and worksheets.



### Outstanding software & services

Complementing the DX 3240 and DX 3440, Ricoh offers a superb range of software solutions and services. Designed to add value, they ensure that our devices continue to operate seamlessly and reliably. These innovative products and services cover all aspects of your business, including document management, network control, consultancy, training and unrivalled support. They offer a tailor made solution to improve productivity, workflow efficiency and cost control throughout your organisation.



### Kinder to the environment

We strive for quality in everything we do. The DX 3240 and DX 3440 offer clean and quiet operation as well as extremely low power consumption. These duplicators also comply with and even exceed EU environmental legislation, which means the products do not contain lead, chromium, cadmium or even PVC.

## GENERAL

<b>Type:</b>	Digital, desktop	
<b>Printing process:</b>	Press roller system, full automatic one drum system	
<b>Originals:</b>	Sheets/books	
<b>Original size:</b>	Platen glass:	Maximum: 297 x 432 mm
	ADF:	Minimum: 105 x 128 mm Maximum: 297 x 432 mm
<b>Print paper size:</b>	Minimum:	90 x 140 mm
	Maximum:	297 x 420 mm (A3 paper feed mode)
<b>Print paper weight:</b>	47 - 210 g/m <sup>2</sup>	
	A3 paper feed mode:	DX 3240: 52 - 157 g/m <sup>2</sup> DX 3440: 52 - 81 g/m <sup>2</sup>
<b>Print area:</b>	DX 3240:	210 x 288 mm (A4 drum)
	DX 3440:	250 x 355 mm (B4 drum)
<b>Print speed:</b>	80 - 100 - 130 sheets per minute (3 steps)	
	A3 paper feed mode:	80 sheets per minute
<b>First print time:</b>	Less than 33 seconds (A4)	
<b>Resolution:</b>	300 dpi (Fine mode: 300 x 400 dpi)	
<b>Image modes:</b>	Letter, photo, letter/photo (auto separation), tint, pencil	
<b>Image position:</b>	Vertical:	± 10 mm
	Horizontal:	± 10 mm
	A3 paper feed mode:	
	Vertical:	DX 3240: -20 mm fixed DX 3440: -10 mm fixed
	Horizontal:	Fixed
<b>Reproduction ratios:</b>	4 reductions:	71, 82, 87, 93%
	3 enlargements:	115, 122, 141%
<b>Colour printing:</b>	By replacing colour drum	
<b>Paper feed table capacity:</b>	1,000 sheets (80 g/m <sup>2</sup> )	
<b>Delivery table capacity:</b>	1,000 sheets (80 g/m <sup>2</sup> )	
	A3 paper feed mode:	500 sheets (80 g/m <sup>2</sup> )
<b>Power source:</b>	220 - 240 V, 50/60 Hz	
<b>Power consumption:</b>	Maximum:	Master making: 160 W Printing: 160 W (at 130 sheets per minute)
	Energy saver mode:	Less than 3 W
<b>Dimensions (W x D x H):</b>	With platen cover:	1,244 x 676 x 633 mm
	With ADF:	1,244 x 676 x 686 mm
<b>Weight:</b>	With platen cover:	70.5 kg
	With ADF:	75 kg

## ADDED VALUE FEATURES

Combine two originals, image repeat, skip feed, margin erase, auto cycle, user code, auto background correction, programme mode, class/memory mode, economy mode, security mode, tint mode, energy saver mode, spot colour printing with optional colour drum units

## OPTIONS

- Printer controller VC-20
- Platen cover
- 30-sheet Auto Document Feeder
- Colour drum: DX 3240: Type 20 A4  
DX 3440: Type 20 B4
- Tape dispenser
- Cabinet

## CONSUMABLES

- Master for DX 3240 (300 A4 masters/roll)
- Master for DX 3440 (260 B4 masters/roll)
- Black ink (600 ml/cartridge)
- Colour inks type II (600 ml/cartridge): red, blue, yellow, green, purple, navy, brown, maroon, orange, teal
- Tape dispenser tape

For availability of models, optional apparatus and software, please consult your local Ricoh supplier.

For more information, please visit

[http://www.ricoh-europe.com/products/digitalduplicators/all\\_about\\_priort.xhtml](http://www.ricoh-europe.com/products/digitalduplicators/all_about_priort.xhtml)



ISO9001: 2000 certified  
ISO14001 certified

Ricoh has designed these products to meet EC ENERGY STAR guidelines for energy efficiency.

Ricoh believes in conserving the earth's precious natural resources. This brochure is printed on environmentally friendly paper: 50% recycled fibres, 50% chlorine free bleached pulp.

These products comply with EU RoHS directive (RoHS: Restriction of Hazardous Substances, July 2006).

All brand and/or product names are trademarks of their respective owners.

Specifications and external appearance are subject to change without notice. The colour of the actual product may vary from the colour shown in the brochure.

Copyright © 2008 Ricoh Europe PLC. All rights reserved. This brochure, its contents and/or layout may not be modified and/or adapted, copied in part or in whole and/or incorporated into other works without the prior written permission of Ricoh Europe PLC.

[www.ricoh-europe.com](http://www.ricoh-europe.com)