

MP C6502SP MP C8002SP

Digital Colour Multi Function Printer

☑ Copier ☑ Printer ☑ Facsimile ☑ scanner



MP C6502SP

65
ppm B/W Colour

MP C8002SP

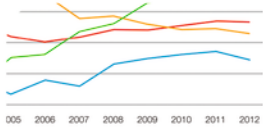
80
ppm B/W Colour

Revolutionise your office colour production.

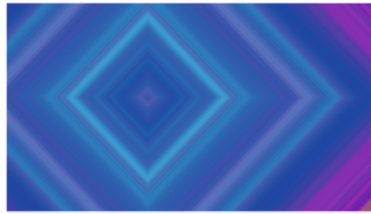
You need innovative technology that helps you excel in the marketplace. Which is why Ricoh have designed the all-in-one MP C6502SP/MP C8002SP. They effortlessly accelerate your workflow with benchmark output speeds and supreme image quality. Along with enhanced media handling capability and ease of use for everyone, they lead the way from start to finish. And help your business do the same.

- Outstanding high-speed printing
- Extremely high image quality
- Versatile paper handling
- Ease of use for everyone
- Accelerate your workflow

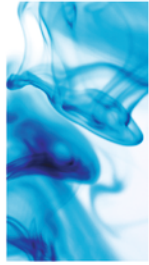




unaged Print Services Association (MPSA) defines MPS as "the active management and automation of document output devices and related business processes." While competitive MPS firms focus tightly on device and print management, Ricoh MPS addresses the business issues surrounding the management of both print and electronic information.



Sets the benchmark in all-in-one colour printing for the office



Class-leading technology

Get the boost your business needs with high-speed printing in both full colour and monochrome at up to 80 pages/minute. It means that printing in colour doesn't compromise productivity. Also duplex printing runs at full speed for incredibly fast production of high-quality doubled-sided colour and black and white output. Plus scanning speed is a class-leading 120 spm (simplex) and 220 spm (duplex).



Professional colour image quality and consistency

These new generation all-in-one printers offer outstanding colour output so you can cut time and costs by keeping your document production in-house. The latest VCSEL technology and new chemical toner, which are used in Ricoh's high-end printers, ensure supreme image quality for professional results that are best in class.



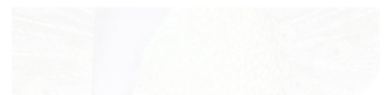
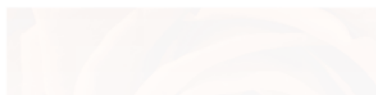
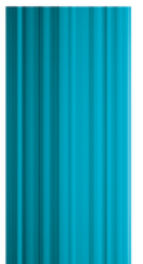
Ease of use for everyone with simple operation

The user-friendly operation panel displays offer outstanding ease of use. Includes LED lights so you can monitor operation from a distance and 'on the fly' toner replacement to maximise uptime and productivity.



Expert finishing

Take advantage of the new Flat Fold Booklet function as a default. Its thin, neat format gives a more professional look than traditional booklets. And Folding Function without Staple is one of the many other advanced finishing options Ricoh makes available to improve your business output and customer offering.





Designed to maximise your success

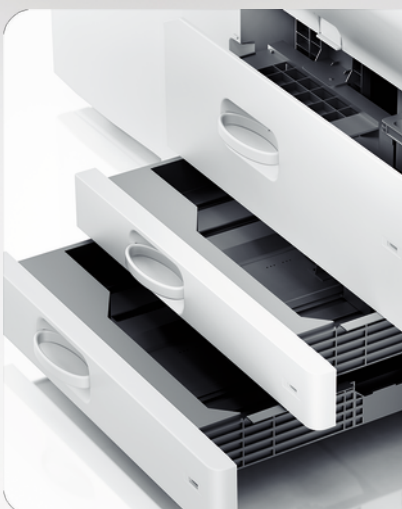


Class-leading productivity

Colour can be a bottleneck to productivity as some devices slow considerably when printing in colour. MP C6502SP produces 65 pages a minute and MP C8002SP produces 80 pages a minute in both full colour and black and white. Duplex runs at full engine speed for incredibly fast production. Single pass duplex feed, which scans the front and back of the originals at the same time, offers 120 ipm (Simplex) and 220 ipm (Duplex) in both colour and black and white.

Supreme image quality in high-end office printing

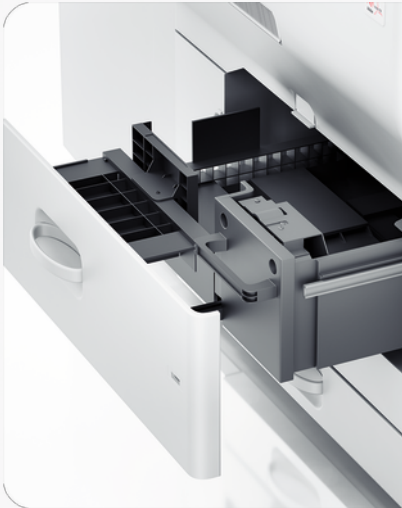
Our innovative VSCEL technology gives best in class resolution of up to 4800 dpi creating outstanding image quality with precise front/back registration and consistent colour application. And the new composition PxP EQ chemical toner has smaller, more uniformly sized toner particles, which support high-resolution printing and ensure fine colour graduation. This expands the colour range by approximately 10%.



Flexibility in paper handling

Print on SRA3+ paper to display crop marks for proofing – essential for designers and graphic artists. Both large and smaller business can benefit from the ability to output more on one sheet. Both printers can also support up to 300gsm (Simplex) or 256gsm (Duplex). High capacity paper trays holding up to 8,100 sheets minimise printing interruptions.

Accelerate your workflow



Smooth operation

Toner and paper can be replaced on-the-fly to maximise uptime. Toner bottles are easily accessed from the front of the unit. The unique auto-draw paper tray automatically closes to prevent accidentally damage. Also by optimising the paper path, jams are reduced by 25% compared to previous units. Plus the operation panel features animations and LED lights that easily guide you through the clearance process should one occur. There is no need to open the front cover or unlock levers.

Professional inline finishing

Produce attractive documents using a full complement of finishing choices. 2,000-sheet and 3,000-sheet finishers are available as well as a 2,000-sheet booklet finisher with the new Ricoh Unique Flat Fold booklet function. Folding without staples, Finishing non-standard paper size and poster printing are newly available in the many other finishing options.



Energy saving

The MP C6502SP/MP C8002SP have an Eco-Friendly Indicator on the information screen. Duplex Printing is set as default to save on paper and cost. New recovery methods from energy save mode reduce power consumption. Whilst the Power On/Off timer reduces TCO and energy costs. Both are also Energy Star and BAM compliant.

Optimises your environment

Extends your capabilities

Save time and paper. Cut the time you need to look for documents by searching for specific words with the optional Searchable PDF function that embeds invisible text on scanned PDF images. Searchable PDF files can be sent to email, folders and external media (SD/USB). Copy the front and back of an ID card or other small originals onto one side of paper by using ID Card Copy. This saves considerable time and paper if you have to copy ID cards regularly.



Optional Fiery colour controller

The E-22B colour controller integrates seamlessly. It incorporates the latest FS100 Fiery platform, a high-performance 2.9 GHz Intel processor, 2 GB memory and a powerful 500 GB HDD. This outstanding combination will improve your RIP productivity for complex print jobs.

A versatile resource

Fiery controllers provide tight control of job queues and precise colour management (Pantone Plus). The E-22B is Pantone® calibrated for a guaranteed Pantone library match. The E-22B also comes with Fiery FreeForm, which enables the printing of personalized jobs and is a great entry level solution for Variable Data Printing.



The options you need to succeed



- 1 Colour LCD panel
- 2 220-sheet Single Pass Document Feeder
- 3 Direct Drawing Unit
- 4 2 standard 1,250-sheet paper trays (tandem); 2 x 550-sheet and bypass tray of 100 deliver 3,700 sheet capacity in total
- 5 2.200 sheet SRA3+ LCT
- 6 One station cover Interposer
- 7 2,000 sheet booklet finisher (65 sheet staples)

MP C6502SP/MP C8002SP

MP C6502SP/MP C8002SP

GENERAL

Warm-up time:	45 seconds
First output speed:	Full colour: 7.2/6.2 seconds B/W: 5.3/4.6 seconds
Continuous output speed:	Full colour: 65/80 pages per minute B/W: 65/80 pages per minute
Memory:	Standard: 2.5 GB
HDD:	640 GB
Dimensions (W x D x H):	750 x 880 x 1,225 mm
Weight:	241 kg
Power source:	220 - 240 V, 50/60 Hz

COPIER

Copying process:	4-Drum Dry Electrostatic Transfer System with internal transfer belt
Multiple copying:	Up to 9,999 copies
Resolution:	600 dpi
Zoom:	From 25% to 400% in 1% steps

PRINTER

Printer language:	Standard: PCL5c, PCL6, XPS, PDF, PDF direct print, Mediaprint (JPEG/TIFF) Option: Adobe® PostScript® 3™, IPDS
Print resolution:	1,200 x 4,800 dpi
Interface:	Standard: USB 2.0, SD slot, Ethernet 10 base-T/100 base-TX, Ethernet 1000 Base-T Option: Bi-directional IEEE 1284, Wireless LAN (IEEE 802.11a/b/g/n), Bluetooth
Network protocol:	TCP/IP (IP v4, IP v6), IPX/SPX (Option)
Windows® environments:	Windows® XP, Windows® Vista, Windows® 7, Windows® 8, Windows® Server 2003, Windows® Server 2008, Windows® Server 2008R2, Windows® Server 2012
Mac OS environments:	Macintosh OS X v10.2 or later
UNIX environments:	UNIX Sun® Solaris HP-UX SCO OpenServer RedHat® Linux Enterprise IBM® AIX
Novell® Netware® environments:	v6.5
SAP® R/3® environments:	SAP® R/3®
Other supported environments:	NDPS Gateway AS/400® using OS/400 Host Print Transform

SCANNER

Scanning speed:	Full colour: Maximum 120 originals per minute B/W: Maximum 120 originals per minute
Resolution:	Maximum: 600 dpi
Original size:	A3, A4, A5, B4, B5
Bundled drivers:	Network TWAIN
Scan to:	E-mail (SMTP, POP, IMAP4), Folder, USB, SD card, SMB, FTP, NCP

FAX

Circuit:	PSTN, PBX
Compatibility:	ITU-T (CCITT) G3, Additional G3 (option)
Resolution:	8 x 3.85 line/mm, 200 x 100 dpi 8 x 7.7 line/mm, 200 x 200 dpi 8 x 15.4 line/mm, 400 x 400 dpi (Option) 16 x 15.4 line/mm, 400 x 400 dpi (Option)
Transmission speed:	G3: 2 second(s)
Modem speed:	Maximum: 33.6 Kbps
Scanning speed:	2 second(s)
Memory capacity:	Standard: 4 MB Maximum: 28 MB

PAPER HANDLING

Recommended paper size:	SRA3, A3, A4, A5, A6, B4, B5, B6
Paper input capacity:	Maximum: 8,100 sheets
Paper output capacity:	Maximum: 3,500 sheets
Paper weight:	Standard paper tray(s): 52.3 - 256 g/m ² Bypass tray: 52.3 - 300 g/m ²

ECOLOGY

Power consumption:	Maximum: 2,400 W Ready mode: 450 W Low power mode: 196.9/199.3 W Sleep mode: 0.68 W TEC (Typical Electricity Consumption): 5.06/6.48 kW/h
--------------------	---

SOFTWARE

Standard:	Web SmartDeviceMonitor®, Web Image Monitor
Optional:	GlobalScan NX, Streamline NX, Card Authentication Package, Unicode Font Package for SAP, Equitrac PCC V4

OPTIONS

2,200-sheet large capacity tray, 4,400-sheet large capacity tray, 3,000-sheet finisher, 2,000-sheet booklet finisher, Punch kits, 9-bin mailbox, Cover interposer, Tab sheet unit, Copy tray, Jogger unit, Copy Connect Kit, Plockmatic Booklet maker, Bi-directional IEEE 1284, Bluetooth, Gigabit Ethernet, Netware, PostScript3, IPDS unit, Browser unit, Counter interface, File format converter, Data Overwrite Security Unit (Certified version), Copy Data Security Unit, Fax Connection Unit, 2nd Super G3 port, Fax memory, Fax option, Multi folding unit, Unicode Font Package for SAP, Wireless LAN (IEEE 802.11a/g/n), OCR Unit, Cooling Fan Unit, Smart Card Reader Built-in Unit, GBC StreamPunch Pro

CONSUMABLES

Toner capacity:	Black: 48,500 prints Cyan: 29,000 prints Magenta: 29,000 prints Yellow: 29,000 prints
-----------------	--

For availability of models, options and software, please consult your local Ricoh supplier.



ISO9001 certified, ISO14001 certified, ISO27001 certified

All brand and/or product names are trademarks of their respective owners.

Specifications and external appearance are subject to change without notice. The colour of the actual product may vary from the colour shown in the brochure. The images in this brochure are not real photographs and slight differences in detail might appear.

Copyright © 2013 Ricoh Europe PLC. All rights reserved. This brochure, its contents and/or layout may not be modified and/or adapted, copied in part or in whole and/or incorporated into other works without the prior written permission of Ricoh Europe PLC.

www.ricoh-europe.com